

HIT M P

High performance nail anchor for all base materials



HIT M P

With galvanized screw nail and flat collar



Description

Premounted hammer screw anchor. The saw tooth thread makes it easy to drive in and unscrew (Pz2). The sleeve is made of polyamide 6 and is resistant to weathering, ageing and rotting. It can withstand temperatures from -20 to +60°C. The expansion nail is from galvanized steel.

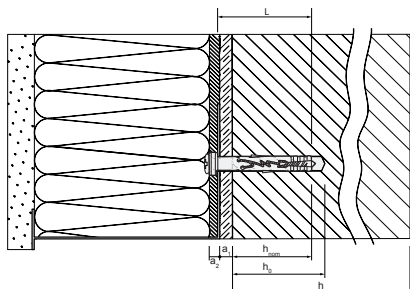
Application

The anchor is designed for fixing base profiles and lightweight non-structural metal supports in external wall insulation systems (ETICS).

Technical data

European Technical Approval:	ETA 06/0032
Technical guideline:	ETAG 014
Use categories dle ETAG 014:	A - B - C
Anchor diameter d_0 :	5, 6, 8 mm
Minimum embedment h_{nom} :	20 - 30 mm
Sleeve material:	Polyamide PA6
Screw material:	Galvanized steel

Drawing

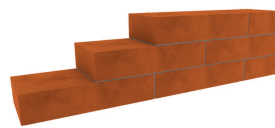
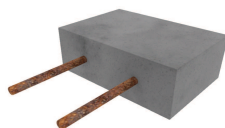


- L - anchor length
- h_{nom} - minimum embedment depth
- h_0 - minimum drilling depth
- h - base member thickness
- a_1 - render thickness
- a_2 - gluing mortar thickness + facade surface flatness tolerance

Features

- Anchor with European Technical Approval
- Short and efficient anchoring zone
- Easy and quick installation through the part to be fixed
- Expansion through hammering or screwing
- Flat and wide collar ensuring a tight fixing
- Easy to unscrew
- The M shape ensures the best expansion in all solid and hollow base materials

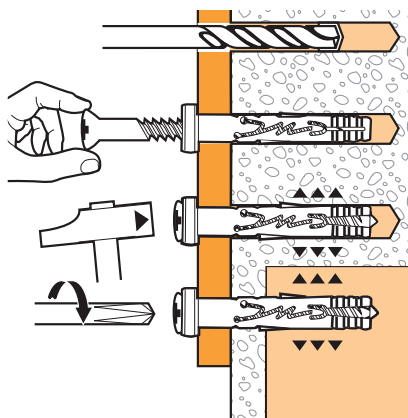
Materials acc. to ETAG 014: A - B - C



Technical parameters

HIT M P	code	drilling diameter d_0 (mm)	total length L (mm)	min. embedment h_{nom} (mm)	min. drilling depth h_0 (mm)	max. thickness to be fixed t_{fix} (mm)	pcs/box
HIT M 5 x 27 (P)	050116	5	27	20	40	5	200
HIT M 5 x 37 (P)	050117	5	37	20	40	15	200
HIT M 6 x 32 (P)	050118	6	32	25	40	5	200
HIT M 6 x 39 (P)	050119	6	39	25	40	12	100
HIT M 6 x 52 (P)	050121	6	52	25	40	25	100
HIT M 6 x 67 (P)	050122	6	67	25	50	40	100
HIT M 8 x 42 (P)	050123	8	42	30	50	10	100
HIT M 8 x 62 (P)	050124	8	62	30	50	30	100
HIT M 8 x 92 (P)	050125	8	92	30	50	60	100
HIT M 8 x 112 (P)	050126	8	112	30	50	80	100
HIT M 8 x 132 (P)	050127	8	132	30	50	100	100

Installation



- Drill a hole through the part to be fixed according to the diameter of the fixing. Drill into hollow bricks without impact and ideally with a special dedicated drill bit.
- Insert the anchor by hand as deep as possible.
- Tap on the expansion nail to obtain the complete setting of the anchor and until the head of the nail comes into contact with the flange of the sleeve.