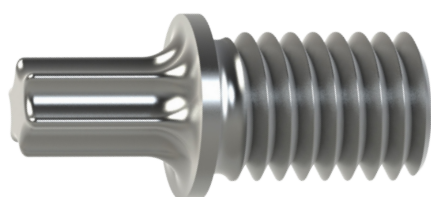
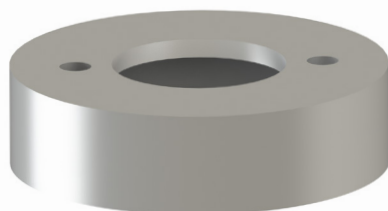
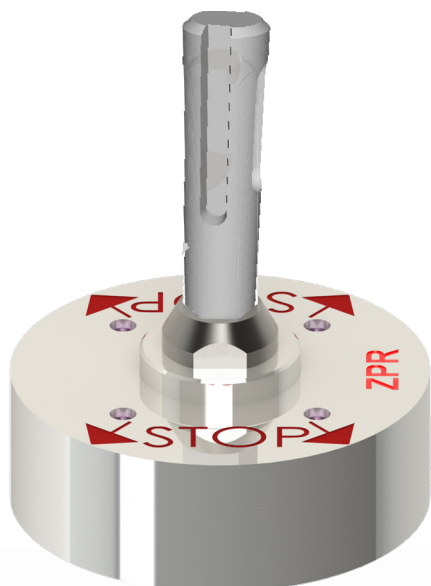
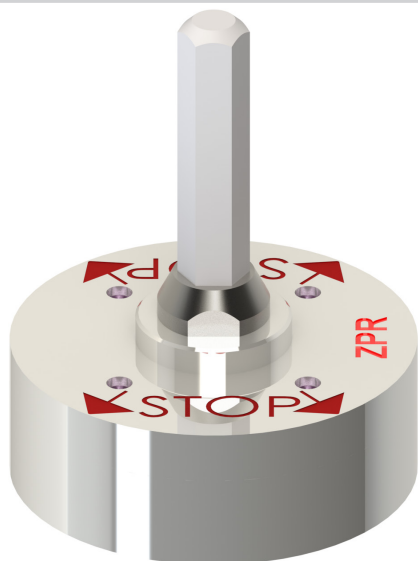


# BRAVOLL<sup>®</sup> ZPR, ZPR SDS

## Picture



## Description

Setting tool ZPR - for countersunk installation of screw-in anchors in contact insulation systems (ETICS).

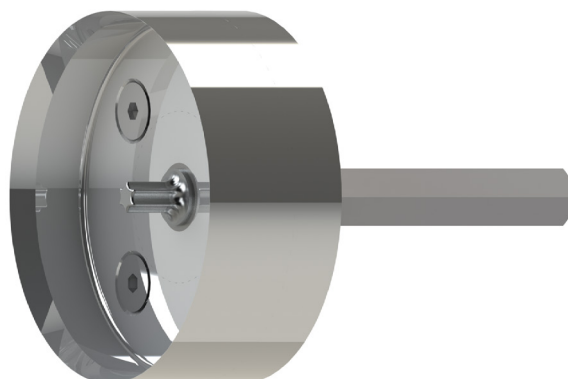
## Technical data

Screwing bit: TORX<sup>®</sup> T30  
 Shank ZPR: hexagonal 10 mm  
 Shank ZPR SDS: SDS - plus  
 Material: Alluminium, steel

## Features

- cleanliness during application - no waste of EPS, MW!
- precise and uniform setting of insulation anchor plates in to the insulation material boards - eliminates all unwished visual problems on facades
- low weight of the setting tool
- very simple and easy-to-use tool

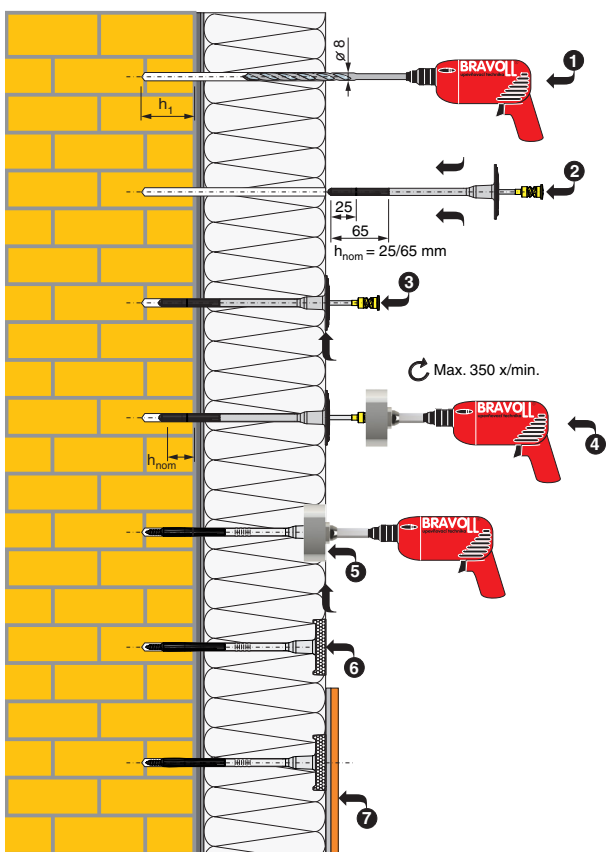
Product	order number	pc
ZPR	12297	1
ZPR SDS	12305	1



Product	order number	pc
Spare crown for ZPR	12301	1

Product	order number	pc(s)
Spare BIT for MPS, ZPS and ZPR	11545	1
Spare BIT for MPS, ZPS and ZPR	11546	10

Countersunk application with ZPR



- Insert the anchor into the predrilled hole. If necessary, slightly push the anchor with the screwdriver. Shall the anchor setting be difficult, it probably means that the used drill bit is worn (the drilled diameter is too small or too much dust remains inside the hole). It is then necessary to use a new drill bit or better clean the hole. Hollow bricks and aerated concrete should only be drilled without hammering (ideally with a specially designed drill bit).
- Installation must be done with the BRAVOLL ZPR setting tool and an electrical screwdriver with electronic regulation (recommended speed of 350 rpm).
- Drive the screw until the surface of BRAVOLL ZPR with red narrows and „STOP“ comes to the level of the surface of insulation material.
- Insert the BRAVOLL IZ insulation cap in to the shaped cavity, and level it off with the insulation material surface.
- When levelling out surface unevenness, make sure to respect the minimum embedment depth.
- Installation must be done at a minimum temperature of 0° C.

